

# YOUR PARTS SOURCE FOR

LOGGING | GRAVEL | OILFIELD | HIGHWAY



## LOGGING STAKES & BUNKS

Prices Valid until  
March 31, 2025  
While Quantities Last

We carry logging stakes and bunks. We are also able to fabricate bunks and stakes for a number of log trailer manufacturers. **Contact our parts department at 780-962-9100 for pricing.**

## MUD FLAPS

24"x 30" Black HD anti-sail mud flaps, **Part #69011**

**\$32<sup>11</sup>** each



## DYNEEMA LOGGING ROPE

3/8" x 33', **Part #33452**

**\$98<sup>40</sup>** each

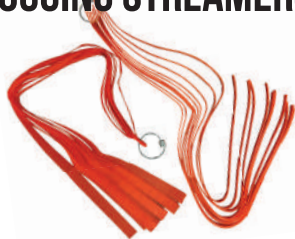
## LOGGING STREAMERS

Mesh  
**Part #77001**

**\$16<sup>08</sup>** each

Urethane Coated  
**Part #77013**

**\$71<sup>25</sup>** each



MAGNETS  
AVAILABLE

## MESH FLAGS

16"x16", Orange,  
**Part #77000**

**\$36<sup>2</sup>** each



## WIDE LOAD MAGNETIC LIGHTS



Amber  
**Part #37028**

**\$85<sup>97</sup>** each

Red  
**Part #37029**

**\$85<sup>97</sup>** each

**Hayworth** 50 YEARS 1975-2025  
TRUCK & TRAILER PARTS



26180 - 114 AVENUE  
ACHESON, AB T7X 6R1



CALL US:  
1-877-962-9110

# NightRider™ LEDs



**12" BEACON LIGHT BAR**  
12", 24W, LED  
Part #38658  
**\$187<sup>28</sup>** each



**4.5" ROUND WORK FLOOD**  
3780 Lumens, LED  
Part #38702  
**\$52<sup>33</sup>** each



**4" SQUARE WORK FLOOD**  
3120 Lumens, LED  
Part #38641  
**\$52<sup>33</sup>** each



**12" CLASS 1 BEACON**  
Blue/Amber, 26 Strobe Pattern, Part #38760  
**\$236<sup>22</sup>** each



**7" DRIVING LIGHTS**  
Set of Two, Round,  
Part #38751  
**\$421<sup>90</sup>** each



**MORE LIGHTS AVAILABLE IN-STORE AND ONLINE**

## OVERSIZE & D-SIGNS



**PVC D-SIGN**  
Heavy Duty. 12" x 96" Part #77177  
REG \$57.96  
**\$47<sup>09</sup>** each



**WIDE LOAD SIGN**  
Wood, 12" x 96" Part #77179  
REG \$162.15  
**\$127<sup>27</sup>** each



**WOOD D-SIGN**  
12" x 96" Part #77175  
REG \$233.07  
**\$189<sup>36</sup>** each

Prices Valid until March 31, 2025 - While Quantities Last

# CARGO SECUREMENT SALE

Prices Valid until March 31, 2025 - While Quantities Last

## RATCHET STRAPS

**2" X 30' RATCHET STRAP C/W FLAT HOOK**  
Part #33010

REG \$29.70  
**\$23<sup>31</sup>** each



**2" X 30' RATCHET STRAP C/W WIRE HOOK**  
Part #33011

REG \$30.61  
**\$24<sup>03</sup>** each



## WINCH BARS

**COMBINATION BOX END ERGO WINCH BAR**  
Part #33388

REG \$65.92  
**\$51<sup>74</sup>** each

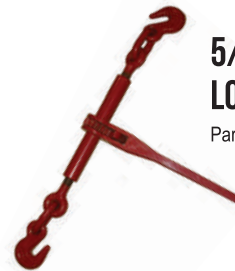


**COMBINATION BOX END WINCH BAR**  
Part #33375

REG \$32.54  
**\$26<sup>54</sup>** each



## RATCHET LOAD BINDERS



**5/16" - 3/8" LOAD BINDER**  
Part #33127

REG \$63.01  
**\$49<sup>46</sup>** each

**3/8" - 1/2" LOAD BINDER**  
Part #33128

REG \$72.70  
**\$57<sup>07</sup>** each

Part #33129

REG \$109.91  
**\$86<sup>28</sup>** each

## FOLDING HANDLE RATCHETS



**5/16" - 3/8" LOAD BINDER**  
Part #33135

REG \$113.37  
**\$88<sup>97</sup>** each

**3/8" - 1/2" LOAD BINDER**  
Part #33134

REG \$160.97  
**\$126<sup>35</sup>** each

**1/2" - 5/8" LOAD BINDER**  
Part #33136

REG \$263.77  
**\$207<sup>04</sup>** each

Prices Valid until March 31, 2025 - While Quantities Last



# WE'VE GOT YOU COVERED

## MESH TARPS

Part #	Description	SALE
66305	88" x 16' Mesh Flip Tarp	<b>\$168<sup>30</sup></b>
66306	88" x 20' Mesh Flip Tarp	<b>\$196<sup>87</sup></b>
66307	88" x 29' Mesh Flip Tarp	<b>\$297<sup>00</sup></b>

**UPGRADE**  
**ELECTRIC TARP DRIVE**



## MANUAL TARP KITS



Part #	Description	SALE
66150	8'x16' Michel's Duraflip Tarp Kit	<b>\$1497<sup>99</sup></b>
66151	8'6"x20' Michel's Duraflip Tarp Kit	<b>\$2070<sup>00</sup></b>
66152	8'6"x29' Michel's Duraflip Tarp Kit	<b>\$2396<sup>53</sup></b>

Part #	Motor	Regular Price	SALE
66369	600W/90:1 0.08 HP Electric Tarp Gear Motor - 1 Year Warranty	<b>\$643.90</b>	<b>\$476<sup>62</sup></b>
66548	1.8HP 12V 90:1 Tarp Motor Super Torq	<b>\$705.38</b>	<b>\$522<sup>13</sup></b>
66371	600W/90:1 1.8 HP Aero Torq Motor, Sidekick/Chute (Short Keyed)	<b>\$628.35</b>	<b>\$535<sup>58</sup></b>



### 4" X 30' CARGO STRAP WITH D-RING

Part #33001

**\$199<sup>7</sup>** each



### 4" X 30' CARGO STRAP WITH FLAT HOOK

Part #33000

**\$169<sup>7</sup>** each

## CHAINS



### 5/16 X 20 GR 70 CHAIN C/W GRAB HOOKS

Part #33156

**\$57<sup>88</sup>** each

### 3/8 X 20 GR 70 CHAIN C/W GRAB HOOKS

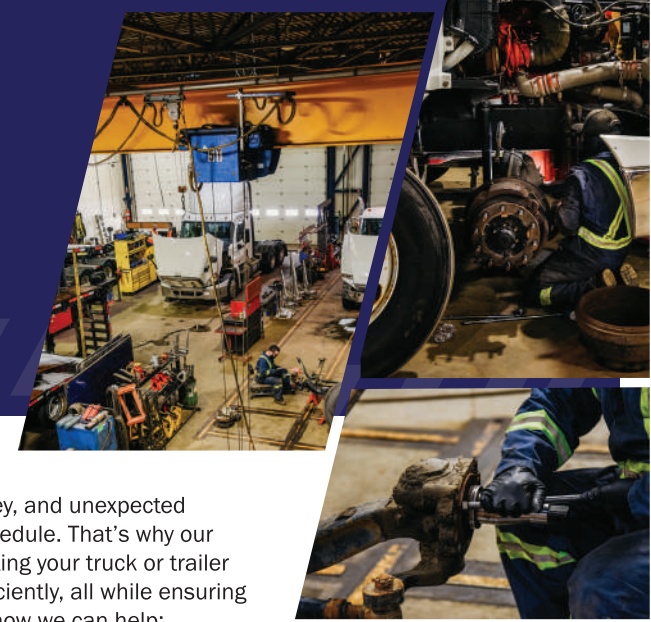
Part #33154

**\$73<sup>87</sup>** each

Made to order chain available | Call parts at 780-962-9100

# SERVICE CENTRE

KEEPING YOU ON THE ROAD & AT WORK



We understand that time is money, and unexpected repairs can disrupt your busy schedule. That's why our Service Team is dedicated to getting your truck or trailer back on the road quickly and efficiently, all while ensuring the highest level of care. Here's how we can help:



## COMMERCIAL VEHICLE INSPECTIONS

Since 1995, we've been performing CVIPs on a wide range of equipment. Our technicians are not only highly qualified but also equipped with the latest tools in our clean, modern shop. Whether you bring in a highway truck, gravel truck, off-road equipment, or a service rig, we've got you covered. We handle all trailer types and even safety commercial Light Duty trucks.

Starting at

TRAILER CVIP... \$150<sup>00</sup> TRUCK CVIP..... \$250<sup>00</sup>



## LINERS: HEAVY-DUTY SOLUTIONS

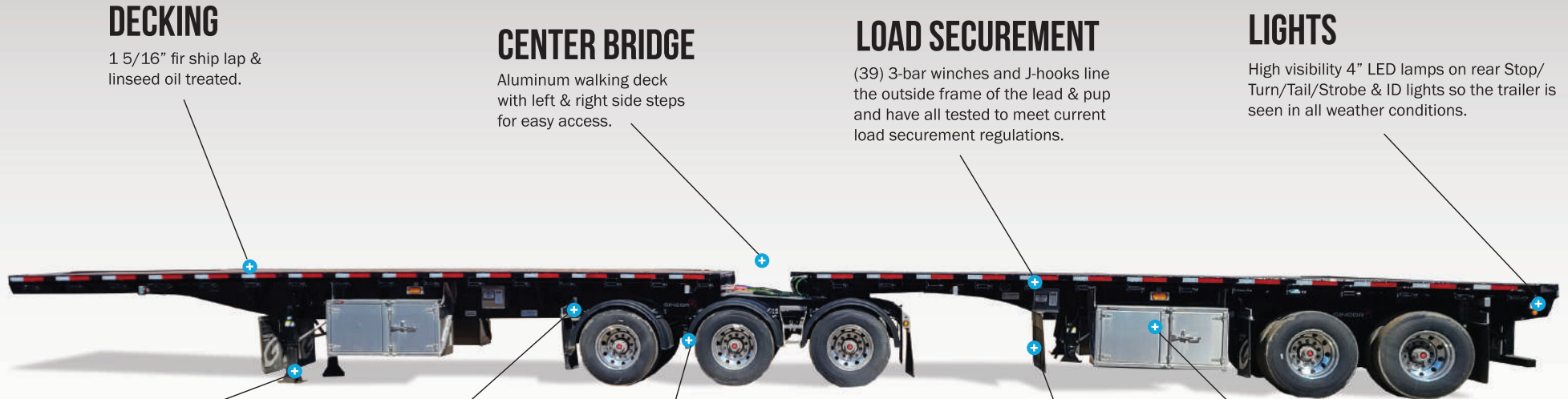


Our one-piece Quick-Slide box and hopper liners are designed to handle it all—dirt, clay, sand, gravel, stone, snow, salt, compost, fly ash, fertilizer, silage, or feed. Made from Ultra High Molecular Weight Polyethylene (UHMW-PE), these liners are built for the toughest jobs, ensuring an even flow every time.

TO BOOK, CONTACT OUR SERVICE DEPARTMENT AT 780-962-9100



# SUPER B FLAT DECK



## DECKING

1 5/16" fir ship lap & linseed oil treated.

## CENTER BRIDGE

Aluminum walking deck with left & right side steps for easy access.

## LOAD SECUREMENT

(39) 3-bar winches and J-hooks line the outside frame of the lead & pup and have all tested to meet current load securement regulations.

## LIGHTS

High visibility 4" LED lamps on rear Stop/Turn/Tail/Strobe & ID lights so the trailer is seen in all weather conditions.

## TWO-SPEED LANDING GEAR

This trailer is equipped with Holland Mark V two-speed landing gear, which has a static load rating of 120,000 lbs.

## FRAME

100,000 psi high tensile steel is used for the flange and the webb, making this a strong trailer with a long service life.

## LOAD SENSING AXLE LIFT SYSTEMS

Tuff-Lift load sensing lift assemblies on the 1st, 2nd, and 4th axles adjust tire contact based on load weight, cutting fuel costs, extending tire life, and reducing maintenance expenses.

## FULL MUDFLAP PACKAGE

This trailer comes standard equipped with 3 mudflaps ahead of the landing gear on the lead & pup, with 2 mudflaps ahead and behind axle groups.

## ALUMINUM TOOLBOXES

Two 24"x30"x60" toolboxes on lead trailer and two on the pup. The toolboxes utilize a no-fuss locking system that won't freeze up in the winter.

## Premium Features, Affordable Price

Discover exceptional value and advanced features with our Gincor Super B Flat Deck Trailers, a cost-effective alternative to other well-known super b flat deck brands. Manufactured with precision and equipped for optimal performance, these trailers stand out with their robust design and budget-friendly pricing.



Scan for specs, photos, & video



Regular \$119,900.

**\$111,900**

Monthly payments as low as \$2042

3 IN STOCK



## BRAKES: SAFETY AND PRECISION ON THE ROAD

If your brakes are pulling, pulsating, making noise, or if your pedal feels off, it's time for a check-up. Whether it's your truck or trailer, we diagnose and repair all brake issues, so you can drive with confidence.



## FRAME STRAIGHTENING: RESTORE YOUR INVESTMENT

Turn a written-off truck or trailer back into a money-maker. Our JOSAM Frame System and expert frame specialists make us one of the few shops that can deliver exceptional frame and axle straightening work. Even other shops trust us with their customers' equipment.



## WELDING & FABRICATION: CUSTOM SOLUTIONS TO FIT YOUR NEEDS

From small repairs to custom fabrications, our welding team has you covered. We work with aluminum, stainless steel, and high carbon steel, offering both repair and custom manufacturing solutions tailored to your specific needs.



## RE-DECKING: RESTORE YOUR DECKING

Is your decking rotten, splintered, or worn? Our team will handle the re-decking process for you, ensuring your equipment is safe and reliable.



## BASIC OIL CHANGE: ESSENTIAL MAINTENANCE TO KEEP YOU MOVING

Routine maintenance is key to a healthy vehicle. Our basic oil change service includes replacing the oil filter, draining the old oil, and refilling with high-quality oil that meets your truck's specifications. It's a quick, essential service that keeps your engine running smoothly.

## 12 VOLT DUMP BODY VIBRATOR

Designed for use on rear dump, bottom dump and side dump trailers. Delivers fast, complete and clean discharge of sticky, compacted or frozen materials.

- » Reduces risks associated with discharging sticky materials from dump body vehicles.
- » Up to 3,500 ft. lbs of hammer force is delivered at a low enough frequency to minimize fatigue on truck and trailer dump bodies
- » Installation accessories available: momentary on/off switches, 12v electrical solenoids, heavy cable power supplies.
- » Dampener plate extra



Part #55101

**\$1465<sup>06</sup>**



## ALUMINUM DUMP INSERTS FOR 6' AND 8'

### STANDARD SPECIFICATIONS

- » Front wall with air deflector & Screen Window
- » Manual Tarp System
- » 45" Wide Subframe with Cylinder Mount
- » Banjo Holes in Rear Posts for Chains
- » Option to Add Aluminum Chipper Cap

### STANDARD DIMENSIONS

- » Length: 6' or 8'
- » Width: 65 1/4"
- » Subframe Width: 45"
- » Tailgate: 28"
- » Sides: 23 1/2"



TO BOOK, CONTACT OUR SERVICE DEPARTMENT AT 780-962-9100

Contact Sales at 780-962-9100 for more info.



# WE ARE YOUR **GRAVEL** SPECIALISTS

## Canuck Trailers 2025 Tridem Crossgate



Tridem, Quard 450 dump body, Hendrickson Intraax suspension, (12) Alum rims, 11R-24.5 tires, Michel's electric drive load cover, LED lights, Full mudflap package, Grey, H-12894

MONTHLY PAYMENTS	PURCHASE PRICE
<b>\$1,560*</b>	<b>\$85,500</b>

## Canuck Trailers 2025 Tridem Pony Pup



Tridem, Quard 450 dump body, Hendrickson Intraax suspension, (6) Alum rims & (6) steel rims, 11R-24.5 tires, Michel's electric drive load cover, LED lights, Full mudflap package, White, H-13044

MONTHLY PAYMENTS	PURCHASE PRICE
<b>\$1,516*</b>	<b>\$74,800</b>

## Canuck Trailers 2025 Tridem End Dump



Quard 450 dump body, Hendrickson Intraax suspension, (6) Alum rims & (6) steel rims, 11R-24.5 tires, Michel's electric drive load cover, LED lights, Full mudflap package, Silver, H-13037

MONTHLY PAYMENTS	PURCHASE PRICE
<b>\$1,815*</b>	<b>\$99,500</b>

## Lanau Industries 2025 15' Dump Bodies



SH15', Hardox 450, 3/16" Floor & Tailgate, 1/8" Sidewall & Bulkhead, 72" Bulkhead, 36" Sideboard, 12" Sideboard Opening, 48" Highlift Tailgate, Outside Hoist Mount, Lanau Cradle & Tipping Hinge, Lanau Alum. Electric Flip Tarp, Premium Light Package, Paint, Sideboards & Installation Extra

MONTHLY PAYMENTS	PURCHASE PRICE
<b>\$526*</b>	<b>\$25,990</b>

**NO PAYMENTS**  
until  
**APRIL 2025<sup>1</sup>**

If you are thinking about purchasing a new trailer, now is the time. For a limited time Hayworth Financial Services is offering No Payments until April 2025 on select equipment.

**TO LEARN MORE ABOUT OUR FINANCE OPTIONS, CALL 1-866-550-2603**

<sup>1</sup>No payments until April 2025 is a limited time offer from Hayworth Financial Services. Financing is subject to credit approval and qualified equipment. Minimum contract term of 24 months and qualifying assets valued at \$10,000 or higher. Offer is available for items purchased at Hayworth Equipment Sales. First payment will be reflective of date of invoice and at the sole discretion of Hayworth Financial Services. Additional terms and conditions may apply, including a requirement for an advance payment or a capital cost reduction. Contact Hayworth Financial Services for more information at 1-866-550-2603.

## 2012 TENCO 15' SPREADER BOX

Steel body, 8'6" x 15', 24" conveyor, Comes with spreader attachment, Full steel fenders, Extra load lights at rear and mid box, Additional rear markers, Rear back up lights and signals, 30"x18"x18" steel toolbox, No hoist - to be used with tuck mounted hoist, County owned and maintained, H-13051



**PRICE: \$7,500**

Contact Sales at 780-962-9100 for more info.



## 2025 PETERBILT 548 DUMP TRUCK

Paccar PX-9 300hp, Allison 3000 6-spd automatic, Super 40K rears with full lockup, Alcoa Alum Rims, Power Windows/Locks/Mirros, A/C, Lanau 15' Hardox 450 Dump Body, Highlift Tailgate, Electric Flip Tarp, Munie Hotshift PTO & 24GPM Dump Pump, 3 Line System, Rear Trailer Hitch, H-13108

**PRICE: \$261,250**

Contact Sales at 780-962-9100 for more info.

## USED 2013 WESTERN STAR 4900SB DUMP TRUCK



DD16 Detroit, RTL020918B 18-spd, Tires at 60-90%, 36" Sleeper, Bibeau 20' Hardox Box, Rear Pup Hitch, Manual Flip Tarp, (2) Tire Chain Racks, One Owner, 346,800 km showing, H-13151

**\$149,900**

## USED 2012 PETERBILT 367 CRANE TRUCK



Cummins ISX15 525hp, Model 18918B 18-spd, 69K Rears, Full Lockers, Tires at 75-80%, 24T Folding Boom Crane, 19'2" Steel Deck, V4 Air Compressor, 110 Inverter & Power Cord Reel, 136,393km showing, H-13185

**\$247,500**

## USED 2014 PETERBILT 386



Cummins ISX15, Eaton Fuller 13-spd, Tires at 100%, 72" Sleeper, Webasto Engine & Bunk Heater, Magnum Headache Rack, 964,425km showing, Inframe Completed by Hayworth Equipment March 2024, H-13156

**\$69,500**

## USED 2021 PETERBILT 367



Cummins IX15 500hp, Eaton Fuller, 18-spd, 40K Rears, 4-way Lockers, Tires at 80-90%, Headache Rack w/ Chain Hangers, Power Mirrors/Windows/Locks, 36,945km showing, H-13167

**\$236,500**

## USED 2020 WESTERN STAR TANDEM TRUCK



5900XE, Detroit DD16 600hp, Eaton Automatic, 46K Rears, Full Lockup, Tires at 75-90%, High Roof 82", Double Bunk Beds, Webasto Engine & Bunk Heater, 3000w Power Inverter, 1,414,155km showing, H-13175

**\$79,500**

## USED 2013 ALUTREC ALUMINUM STEP DECK



Tridem, 8'6" x 53', Hendrickson Intraax Air Ride, Aluminum wheels, Tires at 40-100%, (2) Alum Toolboxes, 2-spd Landing Gear, Eagle Retractable Tarp System, One Owner, Well Maintained, H-13177

**\$59,500**

Browse used  
**TRUCKS**



Browse used  
**TRAILERS**



# LOOKING TO SELL YOUR TRUCK OR TRAILER?

Contact Sales at 780-962-9100 for more info.

Whether you have a single piece or an entire fleet, we've got the solution for you. As the first truck and trailer consignment center in Edmonton since 1975, we bring 49 years of unmatched expertise in selling consignments. Trust us to get you the best deal with our extensive experience and dedicated service.