

# WE HAVE WHAT YOU NEED

## HEAVY TRUCK & TRAILER

- ✓ PARTS
- ✓ SERVICE
- ✓ SALES
- ✓ RENTALS

Prices Valid until October 31, 2024 - While Quantities Last



## PLASTIC UHMW BOX & HOPPER LINERS

Our heavy duty liners are manufactured from Ultra High Molecular Weight Polyethylene (UHMW-PE). This tough plastic liner is designed for heavy duty applications.

### Features:

- » Compression molded UHMW-PE
- » A far better sliding surface compared to bare steel and aluminum
- » High impact strength
- » 3-4 times more durable than HMW (High Molecular Weight)
- » Temperature range: +180°F to -86°F
- » High temperature asphalt liners to handle up to 350°F available
- » Different thicknesses available: 5/16", 3/8", 1/2"
- » One piece and customized fit liner available



## PLASTIC LINER WELDING REPAIRS AVAILABLE

### IDEAL FOR

- End Dumps
- Body Jobs
- Quad Wagons
- Clam Dumps
- Cross Gates
- Side Dumps
- Pup Trailers
- Conveyor Trailers
- Grain Trailers
- Grain Hoppers
- Sand Spreaders
- Snow Plows



### BENEFITS

- Loads slide easily and quickly
- Safer operation for drivers and equipment
- Extends the life of your box and less wear on hoists
- Reduces the chance of flipovers

# Hayworth

TRUCK & TRAILER PARTS



26180 - 114 AVENUE  
ACHESON, AB T7X 6R1



CALL US:  
1-877-962-9110



100% COR External Audit 2025  
Government of Alberta

SHOP IN STORE MONDAY TO FRIDAY 7:30 PM - 5:00 PM | SHOP ONLINE [WWW.HAYWORTHPARTS.COM](http://WWW.HAYWORTHPARTS.COM)



# WE'VE GOT YOU COVERED

## MESH TARPS

Part #	Description	SALE
66305	88" x 16' Mesh Flip Tarp	<b>\$168<sup>30</sup></b>
66306	88" x 20' Mesh Flip Tarp	<b>\$196<sup>87</sup></b>
66307	88" x 29' Mesh Flip Tarp	<b>\$297<sup>00</sup></b>



## ELECTRIC TARP DRIVE



## MANUAL TARP KITS



Part #	Description	SALE
66150	8'x16' Michel's Duraflip Tarp Kit	<b>\$1497<sup>99</sup></b>
66151	8'6"x20' Michel's Duraflip Tarp Kit	<b>\$2070<sup>00</sup></b>
66152	8'6"x29' Michel's Duraflip Tarp Kit	<b>\$2396<sup>53</sup></b>

Part #	Motor	Regular Price	SALE
66369	600W/90:1 0.08 HP Electric Tarp Gear Motor - 1 Year Warranty	\$576.47	<b>\$427<sup>97</sup></b>
66548	1.8HP 12V 90:1 Tarp Motor Super Torq	\$599.97	<b>\$467<sup>97</sup></b>
66371	600W/90:1 1.8 HP Aero Torq Motor, Sidekick/Chute (Short Keyed)	\$550.11	<b>\$457<sup>97</sup></b>



## WE CARRY PARTS FOR TARPS!

- Tarps (Vinyl & Mesh) • Replacement Arms
- Tarp Stops • Pulleys • Holding Pins
- Pivot Arms • Tarp Patching Kits • Springs
- Brackets • Bearings • Crank Assemblies
- Chain & Gear • Tarp Motors



# CARGO SECUREMENT

# SALE

Prices Valid until October 31, 2024 - While Quantities Last



## 4" X 30' CARGO STRAP WITH D-RING

Part #33001

**\$19<sup>97</sup>**  
each



## 4" X 30' CARGO STRAP WITH FLAT HOOK

Part #33000

**\$16<sup>97</sup>**  
each



## BUNGIE STRAPS

**CASE LOT  
SALE**

Part #	Description	REG	SALE CASE OF 50
33101	15" w/ S-hook	\$50.36	<b>\$44<sup>23</sup></b> ONLY \$0.88/strap
33102	21" w/ S-hook	\$57.58	<b>\$52<sup>75</sup></b> ONLY \$1.05/strap

## CHAINS



## 5/16 X 20 GR 70 CHAIN C/W GRAB HOOKS

Part #33156

**\$81<sup>06</sup>**  
each

## 3/8 X 20 GR 70 CHAIN C/W GRAB HOOKS

Part #33154

**\$100<sup>19</sup>**  
each

**MADE TO ORDER CHAIN AVAILABLE**

Call parts at 780-962-9100

# CARGO SECUREMENT

# SALE

Prices Valid until October 31, 2024 - While Quantities Last

## RATCHET STRAPS

2" X 30' RATCHET  
STRAP C/W FLAT HOOK

Part #33010

REG \$31.88

**\$25<sup>02</sup>**  
each



2" X 30' RATCHET  
STRAP C/W WIRE HOOK

Part #33011

REG \$30.61

**\$24<sup>03</sup>**  
each



## WINCH BARS

COMBINATION BOX END ERGO WINCH BAR

Part #33388



REG \$65.92

**\$51<sup>74</sup>**  
each

COMBINATION BOX END WINCH BAR

Part #33375



REG \$44.52

**\$36<sup>17</sup>**  
each

## OVERSIZE & D-SIGNS



PVC  
D-SIGN

Heavy Duty, 12" x  
96" Part #77177

REG \$57.96

**\$47<sup>09</sup>**  
each



WIDE LOAD  
SIGN

Wood, 12" x 96"  
Part #77179

REG \$162.15

**\$127<sup>27</sup>**  
each



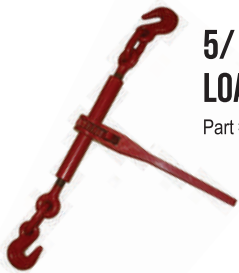
WOOD  
D-SIGN

12" x 96"  
Part #77175

REG \$233.07

**\$189<sup>36</sup>**  
each

## RATCHET LOAD BINDERS



5/16" - 3/8"  
LOAD BINDER

Part #33127

REG \$63.01  
**\$49<sup>46</sup>** each

3/8" - 1/2"  
LOAD BINDER

Part #33128

REG \$72.70  
**\$57<sup>07</sup>** each

1/2"  
LOAD BINDER

Part #33129

REG \$109.91  
**\$86<sup>28</sup>** each

## FOLDING HANDLE RATCHETS



5/16" - 3/8"  
LOAD BINDER

Part #33135

REG \$132.91  
**\$104<sup>33</sup>** each

3/8" - 1/2"  
LOAD BINDER

Part #33134

REG \$160.97  
**\$126<sup>35</sup>** each

1/2" - 5/8"  
LOAD BINDER

Part #33136

REG \$263.77  
**\$212<sup>65</sup>** each

## CARGO NETS

- ✓ Works great to secure loads
- ✓ Comes with adjustable cam straps with vinyl "S" hooks
- ✓ Nets with HD PVC coated 1000D woven polyester mesh



SHORT BOX 56" x 68"

**\$267<sup>75</sup>** each  
REGULAR \$294.73

Part #33071

LONG BOX 56" x 92"

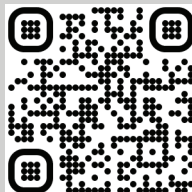
**\$283<sup>50</sup>** each  
REGULAR \$312.07

Part #33070

## WEB WINDER

Part #33528

REG \$30.59  
**\$24<sup>01</sup>** each



SHOP  
ONLINE

## DECKING

1 5/16" fir ship lap & linseed oil treated.

## CENTER BRIDGE

Aluminum walking deck with left & right side steps for easy access.



## TWO-SPEED LANDING GEAR

This trailer is equipped with Holland Mark V two-speed landing gear, which has a static load rating of 120,000 lbs.

## FRAME

100,000 psi high tensile steel is used for the flange and the webb, making this a strong trailer with a long service life.

## LOAD SENSING AXLE LIFT SYSTEMS

Tuff-Lift load sensing lift assemblies on the 1st, 2nd, and 4th axles adjust tire contact based on load weight, cutting fuel costs, extending tire life, and reducing maintenance expenses.

## Premium Features, Affordable Price

Discover exceptional value and advanced features with our Gincor Super B Flat Deck Trailers, a cost-effective alternative to other well-known super b flat deck brands. Manufactured with precision and equipped for optimal performance, these trailers stand out with their robust design and budget-friendly pricing.



Scan for specs,  
photos, & video

# SUPER B FLAT DECK

## LOAD SECUREMENT

(39) 3-bar winches and J-hooks line the outside frame of the lead & pup and have all tested to meet current load securement regulations.

## LIGHTS

High visibility 4" LED lamps on rear Stop/Turn/Tail/Strobe & ID lights so the trailer is seen in all weather conditions.



## FULL MUDFLAP PACKAGE

This trailer comes standard equipped with 3 mudflaps ahead of the landing gear on the lead & pup, with 2 mudflaps ahead and behind axle groups.

## ALUMINUM TOOLBOXES

Two 24"x30"x60" toolboxes on lead trailer and two on the pup. The toolboxes utilize a no-fuss locking system that won't freeze up in the winter.

**3 IN STOCK**

**\$119,900**

Monthly payments as low as \$2183



**CONTACT SALES AT 780-962-9100 FOR MORE INFO**

# WE ARE YOUR **GRAVEL** SPECIALISTS

## Canuck Trailers **Tridem Crossgate**



Tridem, Quard 450 dump body, Hendrickson Intraax suspension, (6) Alum rims & (6) steel rims, 11R-24.5 tires, Michel's electric drive load cover, LED lights, Full mudflap package, Grey, H-12894

MONTHLY PAYMENTS  
**\$1,774\***

PURCHASE PRICE  
**\$74,500**

## Canuck Trailers **Tridem Pony Pup**



Tridem, Quard 450 dump body, Hendrickson Intraax suspension, (6) Alum rims & (6) steel rims, 11R-24.5 tires, Michel's electric drive load cover, LED lights, Full mudflap package, White, H-13044

MONTHLY PAYMENTS  
**\$1,516\***

PURCHASE PRICE  
**\$74,800**

## Canuck Trailers **Tridem End Dump**



Quard 450 dump body, Hendrickson Intraax suspension, Alum rims, 11R-24.5 tires, Michel's electric drive load cover, LED lights, Full mudflap package, Silver, H-13037

MONTHLY PAYMENTS  
**\$1,916\***

PURCHASE PRICE  
**\$93,500**



## **15' Dump Bodies**



SH15', Hardox 450, 3/16" Floor & Tailgate, 1/8" Sidewall & Bulkhead, 72" Bulkhead, 36" Sideboard, 12" Sideboard Opening, 48" Highlift Tailgate, Outside Hoist Mount, Lanau Cradle & Tipping Hinge, Lanau Alum. Electric Flip Tarp, Premium Light Package

MONTHLY PAYMENTS  
**\$526\***

PURCHASE PRICE  
**\$25,990**

8.10% -8.50% interest rate over 60 months O.A.C. First payment due at signing. Terms and conditions apply.



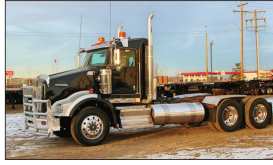
## USED 2013 WESTERN STAR 4900SB DUMP TRUCK



DD16 Detroit, RTL020918B 18-spd, Tires at 60-90%, 36" Sleeper, Bibeau 20' Hardox Box, Rear Pup Hitch, Manual Flip Tarp, (2) Tire Chain Racks, One Owner, 346,800 km showing, H-13151

**\$159,500**

## USED 2013 KENWORTH T800 DAY CAB



ISX 550hp, Model 18918B 18-spd, 46K Rears, Air Ride, Tires at 75-90%, 4:10 Ratio, Hydraulic Wet Kit, Engine Heater, A/C, Recent Engine & Clutch Work, Large Recent Maintenance Work Order, 729,890km showing, H-13078

**\$108,500**

## USED 2014 PETERBILT 367 DUMP TRUCK



Cummins IX15 550hp, Eaton Fuller 18-spd, Full lockers, Tires at 75-80%, 22' Gravel Box, Rear Hitch, Electric Flip Tarp, Alum Moose Bumper w/ Extra Spotlights, 799,975km showing, H-13166

**\$134,500**

## USED 2019 INTERNATIONAL LT625 TANDEM TRUCK



International A26 Big Bore 450hp, Automatic Transmission, 40K Rears, Tires at 65-85%, Class 8 High Roof Sleeper, Webasto Heater, New Headlight Assemblies, 849,520km showing, H-13163

**\$85,500**

## USED 2020 WESTERN STAR TANDEM TRUCK



5900XE, Detroit DD16 600hp, Eaton Automatic, 46K Rears, Full Lockup, Tires at 75-90%, High Roof 82", Double Bunk Beds, Webasto Engine & Bunk Heater, 3000w Power Inverter, 1,414,155km showing, H-13175

**\$123,900**

## USED 2009 LODE KING B-TRAIN FLAT DECK



8'6" x 63', Hendrickson Intraax Air Ride, (10) Outside Alum & (10) Inside Steel Wheels, Tires at 85%, (3) Alum Toolboxes, 2-spd Landing Gear, Auto Greaser System, Headache Rack on Lead & Pup, H-12959

**\$45,500**

Browse used  
**TRUCKS**



Browse used  
**TRAILERS**



# LOOKING TO SELL YOUR TRUCK OR TRAILER?

Contact Sales at 780-962-9100 for more info.

Whether you have a single piece or an entire fleet, we've got the solution for you. As the first truck and trailer consignment center in Edmonton since 1975, we bring 49 years of unmatched expertise in selling consignments. Trust us to get you the best deal with our extensive experience and dedicated service.

# SERVICE CENTRE

KEEPING YOU ON THE ROAD & AT WORK



We understand that time is money, and unexpected repairs can disrupt your busy schedule. That's why our Service Team is dedicated to getting your truck or trailer back on the road quickly and efficiently, all while ensuring the highest level of care. Here's how we can help:



## COMMERCIAL VEHICLE INSPECTIONS

Since 1995, we've been performing CVIPs on a wide range of equipment. Our technicians are not only highly qualified but also equipped with the latest tools in our clean, modern shop. Whether you bring in a highway truck, gravel truck, off-road equipment, or a service rig, we've got you covered. We handle all trailer types and even safety commercial Light Duty trucks.

Starting at

TRAILER CVIP... \$150<sup>00</sup> TRUCK CVIP..... \$250<sup>00</sup>



## LINERS: HEAVY-DUTY SOLUTIONS



Our one-piece Quick-Slide box and hopper liners are designed to handle it all—dirt, clay, sand, gravel, stone, snow, salt, compost, fly ash, fertilizer, silage, or feed. Made from Ultra High Molecular Weight Polyethylene (UHMW-PE), these liners are built for the toughest jobs, ensuring an even flow every time.

TO BOOK, CONTACT OUR SERVICE DEPARTMENT AT 780-962-9100



## **BRAKES: SAFETY AND PRECISION ON THE ROAD**

If your brakes are pulling, pulsating, making noise, or if your pedal feels off, it's time for a check-up. Whether it's your truck or trailer, we diagnose and repair all brake issues, so you can drive with confidence.



## **FRAME STRAIGHTENING: RESTORE YOUR INVESTMENT**

Turn a written-off truck or trailer back into a money-maker. Our JOSAM Frame System and expert frame specialists make us one of the few shops that can deliver exceptional frame and axle straightening work. Even other shops trust us with their customers' equipment.



## **WELDING & FABRICATION: CUSTOM SOLUTIONS TO FIT YOUR NEEDS**

From small repairs to custom fabrications, our welding team has you covered. We work with aluminum, stainless steel, and high carbon steel, offering both repair and custom manufacturing solutions tailored to your specific needs.



## **RE-DECKING: RESTORE YOUR DECKING**

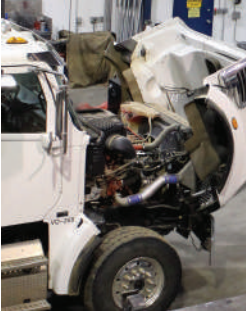
Is your decking rotten, splintered, or worn? Our team will handle the re-decking process for you, ensuring your equipment is safe and reliable.

**TO BOOK, CONTACT OUR SERVICE DEPARTMENT AT 780-962-9100**



## BASIC OIL CHANGE: ESSENTIAL MAINTENANCE TO KEEP YOU MOVING

Routine maintenance is key to a healthy vehicle. Our basic oil change service includes replacing the oil filter, draining the old oil, and refilling with high-quality oil that meets your truck's specifications. It's a quick, essential service that keeps your engine running smoothly.



## AIR CONDITIONING REPAIRS

Our technicians are experts in keeping your air conditioning system in top shape. We offer vacuum leak tests, refrigerant charging, troubleshooting, and complete component repair and replacement. Stay cool no matter how long the haul.



DRUMS & TOTES AVAILABLE

## DIESEL EXHAUST FLUID

9.46L Part #39211

**\$16<sup>97</sup>** each



## AIR BRAKE ANTIFREEZE

1.0L Part #39000

**\$7<sup>22</sup>** each



## MIXED FLEET 50/50

Premixed, 3.78L Part #39006

**\$15<sup>30</sup>** each

Prices Valid until October 31, 2024 - While Quantities Last



26180 - 114 AVENUE  
ACHESON, AB T7X 6R1



CALL US:  
1-877-962-9110



100% COR External Audit 2020  
Government of Alberta