

WE HAVE WHAT YOU NEED

HEAVY TRUCK & TRAILER

✓ PARTS ✓ SERVICE
✓ SALES ✓ RENTALS

Prices Valid until May 31, 2024 - While Quantities Last



RATCHET STRAPS

SALE

- 1 **\$67.49** 4" x 30' Ratchet Strap c/w Flat Hook #33058
- 2 **\$24.97** 2" x 30' Ratchet Strap c/w Flat Hook #33010
- 3 **\$23.72** 2" x 30' Ratchet Strap c/w Wire Hook #33011



4" X 30' CARGO STRAP WITH D-RING

Part #33001

\$19⁹⁷ each



4" X 30' CARGO STRAP WITH FLAT HOOK

Part #33000

\$16⁹⁷ each



RATCHET STRAP

1" x 18', 500 lb working load
Part #33484

\$6⁹⁵ each



RATCHET STRAPS

1" x 15', 4-pack,
266 lb max capacity
Part #33478

\$39⁹⁷ each

MORE CARGO SECUREMENT PARTS AVAILABLE IN STORE & ONLINE

Hayworth

TRUCK & TRAILER PARTS



26180 - 114 AVENUE
ACHESON, AB T7X 6R1



CALL US:
1-877-962-9110



100% COR External Audit 2023
Government of Alberta

SHOP IN STORE MONDAY TO FRIDAY 7:30 PM - 5:00 PM | SHOP ONLINE WWW.HAYWORTHPARTS.COM

SALE

CHROME PARTS

WE HAVE A WIDE SELECTION OF CHROME ACCESSORIES



ALUMINUM TRUCK STACKS

- 1 **\$195.51 each** Curved Chrome Exhaust Extension 6 to 5 #40001
- 2 **\$195.51 each** Miter Cut Chrome Exhaust Extension 6 to 5 #40002
- 3 **\$195.51 each** Bull Horn Chrome Exhaust Extension 6 to 5 #40000

Scan for more chrome



ALUMINUM TOOLBOX

24x24x48, Dropdown
T-Handle Door **Part #70226**

\$1229⁶³ each



ALUMINUM HEADACHE RACKS

84" Cabguards c/w Racks
& Tray, **Part #69207**

\$2104⁶² each



ALUMINUM RIMS

CALL FOR PRICING



CHAIN AND BOOMER HANGER

Part #70284

\$179⁷⁸ each

SAFETY FIRST CORNER



FLAGS



- 1 18"x18" mesh flag #77010 **\$7²⁵** each
- 2 24" stud mount sight rods #70067 **\$57⁹⁷** each
- 3 15"x15" mesh flag c/w 3.5" OD magnet #77004 **\$26²³** each



WIDE LOAD MAGNETIC LIGHTS

Amber
Part #37028

\$85⁹⁷ each

Red
Part #37029

\$85⁹⁷ each



TRIANGLE FLARE KITS

Part #77100

\$44²⁸ each



OVERSIZE LOAD MESH BANNER

Part #77198 - **\$22⁷³** each
18" x 84"

OVERSIZE LOAD VINYL BANNER

Part #77192 - **\$23²⁸** each
18" x 84"



BACKUP ALARM

Medium Duty, 97dB,
12V/24V Part #36550

\$26⁷³ each

VINYL D-SIGN

12" x 96" **\$53⁰⁷** each
Part #77172



TRICO Force.

HIGH PERFORMANCE WIPER BLADES



TRICO Force® is a robustly engineered high-wind beam wiper blade with a patented swept-wing spoiler that slices through wind speeds in excess of 135 mph (220 kph) caused by cross winds, buffeting truck winds and general traffic turbulence.

Features & Benefits

- VorTec® aerofoil converts wind force for maximum windshield contact
- HighGlide® treated rubber element for a smooth, clean and quiet performance
- Robust superstructure for durable all-weather performance
- SWIFT® Easy Connection makes changing wiper blades a breeze

Part #	Description	Price
69359	24" Trico Force Wiper Blade	\$24.56
70054	22" Trico Force Wiper Blade	\$22.06
70056	20" Trico Force Wiper Blade	\$16.53
70055	18" Trico Force Wiper Blade	\$24.41

SHOP ONLINE

HEAVY DUTY TRUCK & TRAILER PARTS

Hayworthparts.com is your online source for Heavy Truck & Trailer Parts, backed by a knowledgeable team here to help. Purchase your parts online and either have them delivered straight to your door or ready for curbside pickup.

Visit hayworthparts.com



DON'T SEE WHAT YOU ARE LOOKING FOR? CALL US!

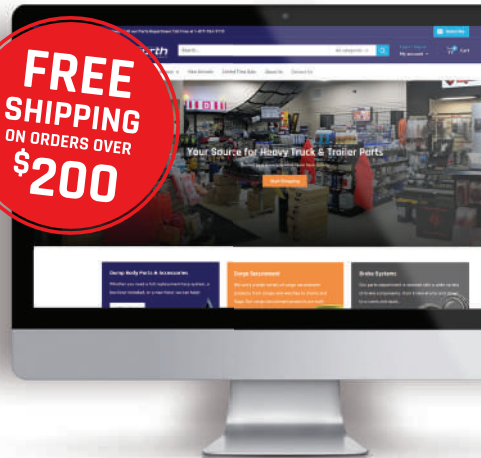


TIMKEN SEALS

STARTING AT \$57.97

Part #	Description
21100	Timken Bearing Set (set 413= HM212049, HM212011)
21101	Timken Bearing Set (set 414= HM218248, HM218210)
21102	Timken Bearing Set (set 415= HM518445, HM518410)
21123	Timken Bearing Set (set 404= 580/572)
21124	Timken Bearing Set (set 403= 594A/592A)

FREE SHIPPING ON ORDERS OVER \$200



Michel's

GET READY
FOR SPRING!

WE'VE GOT YOU COVERED

MESH TARPS

Part #	Description	SALE
66305	88" x 16' Mesh Flip Tarp	\$168³⁰
66306	88" x 20' Mesh Flip Tarp	\$196⁸⁷
66307	88" x 29' Mesh Flip Tarp	\$297⁰⁰

MANUAL TARP KITS

Michel's DURA-FLIP

Part #	Description	SALE
66150	8'x16' Michel's Duraflip Tarp Kit	\$1497⁹⁹
66151	8'6"x20' Michel's Duraflip Tarp Kit	\$2070⁰⁰
66152	8'6"x29' Michel's Duraflip Tarp Kit	\$2396⁵³



WE CARRY PARTS FOR TARPS!

Tarps (Vinyl & Mesh) • Replacement arms
 Tarp stops • Pulleys • Holding pins • Pivot
 arms • Tarp Patching Kits • Springs Brackets
 • Bearings • Crank Assemblies • Chain &
 gear • Tarp motors

UPGRADE ELECTRIC TARP DRIVE



Part #	Motor	Regular Price	SALE
66369	600W/90:1 0.08 HP Electric Tarp Gear Motor - 1 Year Warranty	\$576.47	\$457⁹⁷
66548	1.8HP 12V 90:1 Tarp Motor Super Tork	\$599.97	\$527⁹⁷
66371	600W/90:1 1.8 HP Aero Tork Motor, Sidekick/Chute (Short Keyed)	\$550.11	\$497⁹⁷

Prices Valid until May 31, 2024 - While Quantities Last

LET US INSTALL YOUR TARP

Save time and let our qualified technicians install your new tarp system. We offer a variety of different tarp kits, from flip tarps to retractable tarps, to suit your specific needs. Contact our service or parts department at 780-962-9100 for an installation quote.





SUPER B FLAT DECKS

Discover exceptional value and advanced features with our Gincor Super B Flat Deck Trailers, a cost-effective alternative to other well-known super b flat deck brands. Manufactured with precision and equipped for optimal performance, these trailers stand out with their robust design and budget-friendly pricing.

DECKING

1 5/16" fir ship lap & linseed oil treated.

CENTER BRIDGE

Aluminum walking deck with left & right side steps for easy access.

LOAD SECUREMENT

(39) 3-bar winches and J-hooks line the outside frame of the lead & pup and have all tested to meet current load securement regulations.

LIGHTS

High visibility 4" LED lamps on rear Stop/Turn/Tail/Strobe & ID lights so the trailer is seen in all weather conditions.



TWO-SPEED LANDING GEAR

This trailer is equipped with Holland Mark V two-speed landing gear, which has a static load rating of 120,000 lbs.

FRAME

100,000 psi high tensile steel is used for the flange and the webb, making this a strong trailer with a long service life.

LOAD SENSING AXLE LIFT SYSTEMS

Tuff-Lift load sensing lift assemblies on the 1st, 2nd, and 4th axles adjust tire contact based on load weight, cutting fuel costs, extending tire life, and reducing maintenance expenses.

FULL MUDFLAP PACKAGE

This trailer comes standard equipped with 3 mudflaps ahead of the landing gear on the lead & pup, with 2 mudflaps ahead and behind axle groups.

ALUMINUM TOOLBOXES

Two 24"x30"x60" toolboxes on lead trailer and two on the pup. The toolboxes utilize a no-fuss locking system that won't freeze up in the winter.

3 IN STOCK

\$129,500

Monthly payments as low as \$2000



Scan for specs, photos, & video

CENTERLINE 55T
Hydraulic Detach

10' x 25' WD, 86" & 110" Swing, Tandem & Tridrive Compatible Gooseneck, Tandem Jeep Extension, Single Booster Provisions, Honda 13hp Electric Start Hydraulic Power Pack, Wide Load Lights, Rear Strobe Lights, 275/70R-22.5 Tires, Aluminum Wheels, (6) Load Strap Winches, 3" Fir Decking



Contact Sales at 780-962-9100 for more info.

Multiple On Order

\$181,500

CENTERLINE Tandem
Axle Jeeps



Tandem & Tridrive Compatible, G/N Fenders, AXN Two Speed Landing Gear, Copper RM-230HH- 275/70R-22.5 Tires, (8) Aluminum Wheels, 78" Slide 5th Wheel, Two Kingpin Settings (14" & 27")

In-Stock Now

\$59,500

**Canuck Trailers Step Deck
w/ Spring Ramps**



8'6" x 52', Spring Assisted Rear Ramps, Crossmembers @ 12"o.c., (23) Three Bar Load Winches, (22) J Hooks, 3/8" x 3" Rub Rail, (2) Ace Tool Box, (6) Inside Steel Wheels, (6) Outside Aluminum Wheels, 255/70R-22.5 Tires, Wideload Lights, Rear Strobe Lights, (4) Mudflaps Ahead of Dolly Legs

In-Stock Now

\$88,900

GINCOR TRAILER WERX Air Tilt
Tag Trailer

Tridem, 37'8" Overall Length, 9'6" Plus Rub Rail x 24' Working Decking, 6' Beavertail, Air Tilt, Spring Suspension, 235/75R-17.5 Tires, Steel Wheels, Two Speed Landing Gear, Rub Rail, (10) Pair D-Rings, (12) Ratchet Winches



Multiple On Order

\$60,990

CONTACT SALES AT 780-962-9100 FOR MORE INFO

WE ARE YOUR **GRAVEL** SPECIALISTS

Canuck Crossgate

Multiple In-Stock

\$90,990



See this trailer
in action



Tridem, Quard 450 dump body, Hendrickson Intraax suspension, (6) Alum rims & (6) steel rims, 11R-24.5 tires, Michel's electric drive load cover, LED lights, Full mudflap package, White

Contact Sales at 780-962-9100 for more info.

Canuck Tridem End Dump

Multiple On Order

\$98,990



Tridem, Quard 450 dump body, Hendrickson Intraax suspension, (6) Alum rims & (6) steel rims, 11R-24.5 tires, Michel's electric drive load cover, LED lights, Full mudflap package, White or silver

Contact Sales at 780-962-9100 for more info & to customize your order.

Canuck Pony Pup

Multiple On Order

\$76,990



Tridem, Quard 450 dump body, Hendrickson Intraax suspension, (6) Alum rims & (6) steel rims, 11R-24.5 tires, Michel's electric drive load cover, LED lights, Full mudflap package, White

Contact Sales at 780-962-9100 for more info.

Canuck Quad Axle Wagon

Available to Order

Contact



Quard 450 dump body, Hendrickson Intraax suspension, Alum rims, 11R-24.5 tires, Michel's electric drive load cover, LED lights, Full mudflap package

Contact Sales at 780-962-9100 for more info & to customize your order.

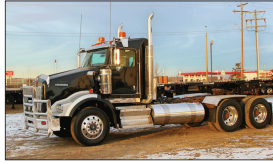
USED 2013 FREIGHTLINER CORONADO 122 COMBO VAC



DD15 Detroit, New RTLO18918B 18-spd, Tires at 65%, 30" Sleeper, VIP Combo Tank Rig-Up, Engine Rebuild at 169,769km, New Transmission at 264,911km, New Hostys Coil, 236,739km showing, H-13135

\$299,990

USED 2013 KENWORTH T800 DAY CAB



ISX 550hp, Model 18918B 18-spd, 46K Rears, Air Ride, Tires at 75-90%, 4:10 Ratio, Hydraulic Wet Kit, Engine Heater, A/C, Recent Engine & Clutch Work, Large Recent Maintenance Work Order, 729,890km showing, H-13078

\$135,500

USED 2014 INTERNATIONAL WORKSTAR 7600



Maxford 13 model A410, 10-spd Auto, Air Ride, Tires at 60-65%, Terex Crane Model BT-4792 (24T, 92' reach, 4 sections), 4 Corner Outriggers with Dolly Pads, 1342 hrs on Crane, 105,434km showing, H-13115

\$172,900

USED 2018 DOEPKER B-TRAIN GRAIN TRAILER



8'6" x 27'10" (lead) 30'9" (rear), Hendrickson Intraax Air Ride, Alum wheels, Tires at 70%, Michel's Side Rolling Tarp, Chute Cranks on Both Sides, Quick Release Tarp Stops, 3 Lift Axles, H-13136

\$134,750

USED 2004 KENWORTH T800 TILT SLIDING DECK



Cat C12 410hp, Eaton Fuller Manual, 46K Rears, Neway Air Ride, Tires at 85%, 28" Sliding Tilt Deck with Winch, Palfinger PK-13,000 Knuckle Boom Picker, PTO with 8110 Hours, 326,028 km showing, H-13093

\$136,700

USED 2021 INTERNATIONAL HV607 TANDEM DUMP TRUCK



Cummins L9, Allison Automatic, 40K Rears, Tires at 50-95%, 15' Bibeau Dump Body & Hoist w/ Michel's Electric Tarp, 50 gal Hydraulic Tank w/ Steel Side Boards, 148,370km showing, H-13132

\$215,550

USED 2009 LODE KING B-TRAIN FLAT DECK



8'6" x 63', Hendrickson Intraax Air Ride, (10) Outside Alum & (10) Inside Steel Wheels, Tires at 85%, (3) Alum Toolboxes, 2-spd Landing Gear, Auto Greaser System, Headache Rack on Lead & Pup, H-12959

\$54,900

USED 2018 FREIGHTLINER CASCADIA 125



D16 Detroit, 18-spd, 46K Rears, Full Lockers, Freightliner Air Ride, Tires at 50-100%, Midroof Sleeper, Paragone Hydraflow Product Pump, 1,011,944 km showing, H-13097

\$86,900

USED 2015 BWS TRIDEM STEP DECK AIR TAIL



10'x 53', Ridewell Air Ride, (6) Alum & (6) Steel Wheels, 255/70R-22.5 Tires at 50-85%, (2) Rear 38" x 72" Single Fold Air Ramps, 60" Full Width Air Gooseneck Ramp, Warn 15K Electric Winch, (2) Toolboxes, H-12966

\$75,500

CONTACT SALES AT 780-962-9100 FOR MORE INFO



ALUMINUM INSERT DUMP BODY

STANDARD SPECIFICATIONS

- » Front wall with air deflector & Screen Window
- » Manual Tarp System
- » 45" Wide Subframe with Cylinder Mount
- » Banjo Holes in Rear Posts for Chains
- » Option to Add Aluminum Chipper Cap

STANDARD DIMENSIONS

- » Length: 6'
- » Width: 65"
- » 1/8" Aluminum Floor
- » Tailgate: 28" x 62"
- » Sides: 23 1/2"

Contact Sales at 780-962-9100 for more info.



RECENT INSTALL FOR FORBES BROS



CASH & CARRY \$8800

Installation available



AIR CONDITIONING SERVICE & REPAIR

Our trained technicians can perform the following services on your air conditioning system:

- Vacuum leak test
- Refrigerant charging
- Troubleshooting
- Component repair & replacement

WE CAN WORK ON

- ✓ Light duty trucks
- ✓ Medium duty trucks
- ✓ Heavy duty trucks
- ✓ Equipment
- ✓ RV's (chassis only)

FOR A ESTIMATE, CONTACT OUR SERVICE DEPARTMENT AT 780-962-9100

BOOK YOUR NEXT CVIP

We've been doing Commercial Vehicle Inspections on a wide variety of equipment since 1995. Our technicians are qualified and knowledgeable, and our shop is clean and outfitted with up-to-date tools and equipment.

Starting at

TRAILER CVIP... \$150⁰⁰

TRUCK CVIP..... \$250⁰⁰



GENERAL REPAIRS

Looking for a reliable heavy truck and trailer dealership for your repair needs? Look no further! Our experienced technicians are fully equipped to handle all types of heavy truck and trailer repairs, from minor maintenance to major overhauls. We use only the highest quality parts and equipment to ensure that your unit runs smoothly and safely on the road.

We understand that your time is valuable, which is why we offer fast, efficient service to get you back on the road as quickly as possible. We also offer competitive pricing to help you save money on your repair costs.

Whether you need routine maintenance, engine repairs, or transmission services, our team of experts is here to help.

WE OFFER

- Oil Change & Lube
- Shocks & Struts
- Coolant System Services
- Brake Repairs
- Exhaust Systems
- Suspension Systems
- And more!

CONTACT SERVICE AT 780-962-9100 FOR MORE INFO

DUMP BODY RIG UPS

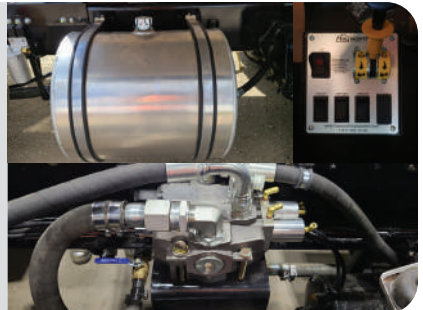
We are known in the industry for our quality dump body rig up services. Our shop is well equipped, and our technicians are experienced in mounting dump bodies on a wide variety of truck makes and models. You can either purchase the dump body from us or we can just handle the installation, the choice is yours.

Contact Sales at 780-962-9100 for more info.

WET KITS

We offer various hydraulic wet kit packages designed to fit your specific truck components and applications. Making sure you have the right equipment for your purpose and truck.

Contact Service at 780-962-9100 for more info.



STOCK UP ON FLUIDS



1 Katz Azz All-In-One Diesel Conditioner, 16 per case #39524 **\$17⁸⁹** each

3 -40 °C Windshield Washer Fluid, 4 per case #39021 **\$4⁴⁹** each

2 Diesel Exhaust Fluid #39211 **\$16⁹⁷** each **BUY 2 OR MORE \$16⁴⁷** each

4 Howes Diesel Treat #39140 **\$25⁷⁹** each

49

1975 - 2024



Since 1975 we have been providing you with experienced advice and personalized services that make your equipment run smoother as well as your business.

When our doors first opened, founders Elmer and Doreen Schmidek made every effort to create a unique personalized service. 49 years later, we take pride in offering the same personalized solutions to our customers.

We value our relationship with you and look forward to working with you.

Hayworth
TRUCK & TRAILER PARTS



26180 - 114 AVENUE
ACHESON, AB T7X 6R1



CALL US:
1-877-962-9110



100% COR External Audit 2020
Government of Alberta