

TRIDEM STEP DECK WITH AIR RAMPS

MODEL: 533DDBA

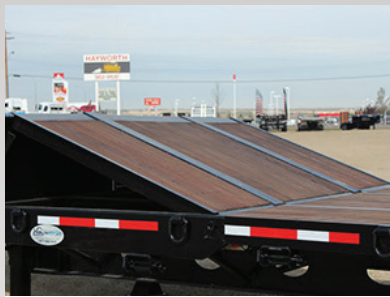


TRAILER FEATURES



FRONT RAMP

A full width air ramp at the front of the lower deck allows for additional loading on the top of the deck.



CROSSMEMBERS & BOLSTERS

Unlike our competition, we use a heavier crossmember & bolster top plates better suited for this type of trailer.

REAR RAMP

Rear air ramps are lowered by a pneumatic cylinder rather than the commonly used expansion spring. This means a safer operation when lowering the ramps to the ground.



FRAME

100,000 psi hi-tensile 6" x 1/2" flanges and 3/16" x 1/4" webb, making a strong trailer with a long service life.

WIDELOAD LIGHTS

Standard equipped with two pairs of swing out wideload lights for when you need to haul wide equipment.



LOAD SECUREMENT

Equipped with (16) pair of D-rings & (11) 3-bar winches with J hooks opposite.

SPECIFICATIONS

MODEL	533DDBA
CAPACITY	45,000 kg GVWR 70,000 lb in 10'
LENGTH	52'5"
WIDTH	9'6"
TOP DECK	11'0"
LOWER DECK LENGTH	34'6"
DECK HEIGHT LENGTH	Upper deck: 60" Lower deck: 41" Unladen
UPPER COUPLER	5/16" @ 50" Height
KING PIN SETTING	2" King pin @ 18" setting
SWING RADIUS	82"
MAIN FRAME	Hi-tensile manufactured single drop positive camber I beam
SIDE RAIL	C6 Structural Channel @ 8.2 lb. ft.
CROSSMEMBER	4" Junior beam @ 12" spacing in gooseneck & lower deck 4" Junior beam @ 9" spacing in beavertail
LANDING GEAR	(2) speed crank down - Crank located on road side
DECK MATERIAL	1 1/8" Apitong wood, Two screws per board per crossmember
FRONT RAMP	Full width 67" L air lift ramp allowing loading on top deck
BEAVERTAIL	Full width 83" L @ 12 degree slope High tensile steel top plates and traction bars in outside beavertail
REAR RAMP	(2) Flip-up 72" L x 37" W, Air assisted for ease of use Air control valve mounted on side rail at rear
LOAD SECUREMENT	(16) pair of heavy duty "D" rings mounted on side rail: (3) on top deck, (11) pair on lower deck & (2) pair on beavertail (11) 3-bar load winches on side rail, J hooks opposite
SUSPENSION	(3) 25,000 lb. air ride c/w restraint chains Manual dump valve & weigh gauge in weather proof box
AXLES	(3) 25,000 lb. @ 83" track (9'0" wide over tires)
AXLE SPACING	60"

HUBS/ DRUMS	10 stud hub piloted, long stud & outboard cast drums
BRAKE LININGS	16.5" x 7" Extended service brake linings Enclosed S-Camshafts
BEARING LUBRICANT	Stemco Guardian seal & 80/90w oil
ABS SYSTEM	Meritor/WABCO 2S/1M ABS
SLACK ADJUSTERS	Automatic slack adjusters
WHEELS	10 stud 8.25 x 22.5 pilot mount steel disc - silver
TIRES	255/70R-22.5 low profile radial
LIGHTING	Integrated Wiring System LED rubber shock mounted seal beam lamps (2) Pair swing out wide load lights (2) Strobe lights in rear frame c/w switch in dump valve box
FINISH	Sandblasted, primed, and painted with PPG urethane paint
SAFETY STRIPE	Applied to 50% of outside side & rear rails as per regulation
CERTIFICATE HOLDER	Mounted on webb of gooseneck
WARRANTY	1 st year - 100% parts & labour 2 nd year - 50% parts & labour 3 rd to 5 th year - 50% parts only

OPTIONS

- **TUFF LIFT** axle lift system
- 120" L x 45" W Bi-fold style ramps
- 17.5K winch c/w wireless remote
- Aluminum toolbox
- Aluminum wheels, lightweight hubs and Centri-Fuse drums
- Different deck lengths & widths
- Tri-drive compatible neck
- Available in tandem or tridem axle configuration

Product improvement is an ongoing process. The manufacturer reserves the right to change any specifications or components on any or all products without prior notice and is under no obligation to undertake modifications to units manufactured to prior changes in specifications.